

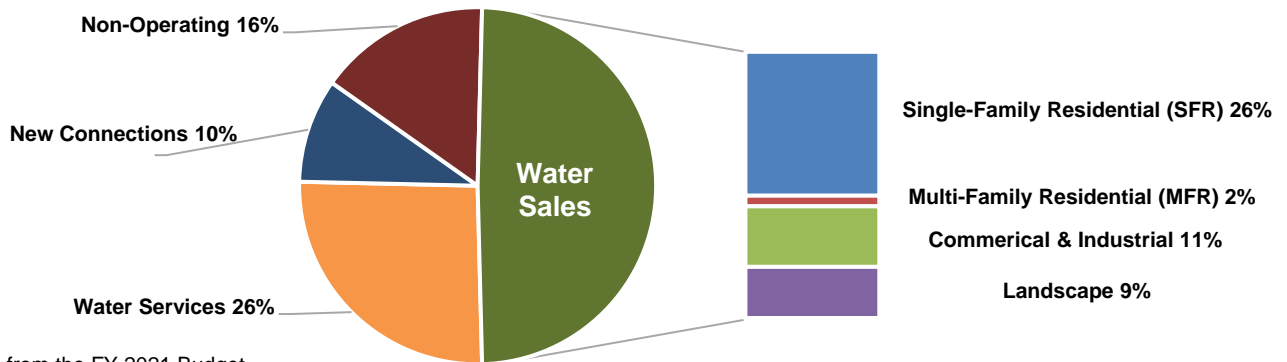


FY 2021 – Q4 Financial Report

July 1, 2020 – June 30, 2021

Revenues

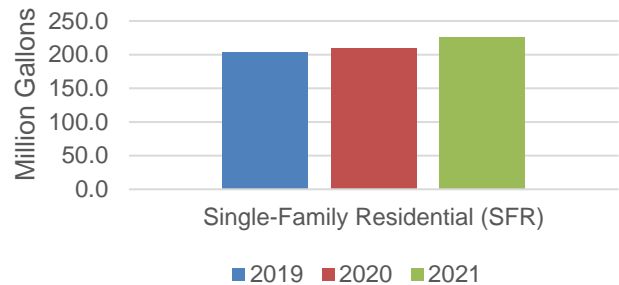
Scotts Valley Water District revenues come from four main sources: Water Sales, Water Services (Basic Service Charge), New Connections, and Non-Operating.*



*Data from the FY 2021 Budget

The District's largest revenue category is Single Family Residential (SFR) Water Sales. Revenue from SFR Water Sales for the period of July 2020 through June 2021 is up 13.4% from the same period in the prior year. This increase has been partially offset by reduced revenue from Commercial & Industrial (CII) customers.

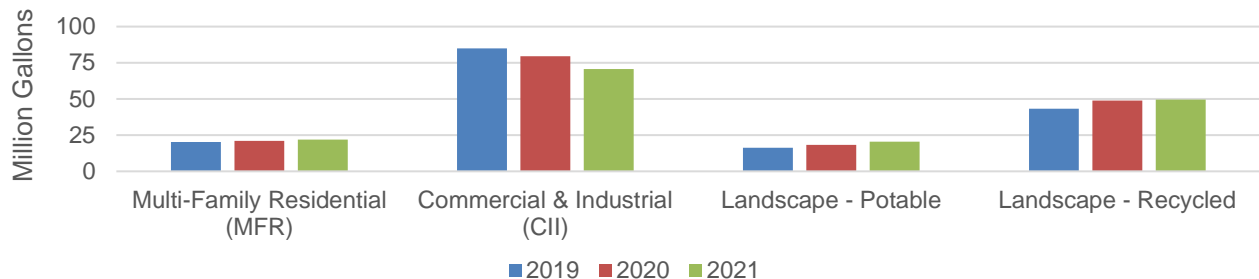
Consumption 3 Year History : SFR (July 2020 through June 2021)



Consumption

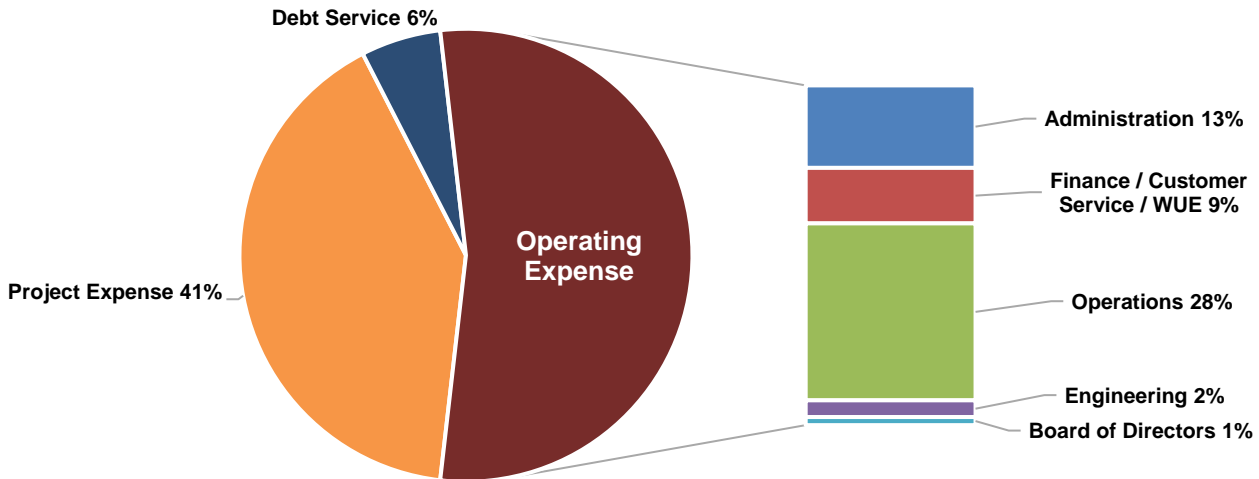
Water consumption by SFR customers has increased 16 million gallons or 7.9% from the same period in FY 2020. CII consumption is down 8.9 million gallons, a decrease of 11.2% from FY 2020.

Consumption 3 Year History : MFR, CII, Landscape (July 2020 through June 2021)



Expenses

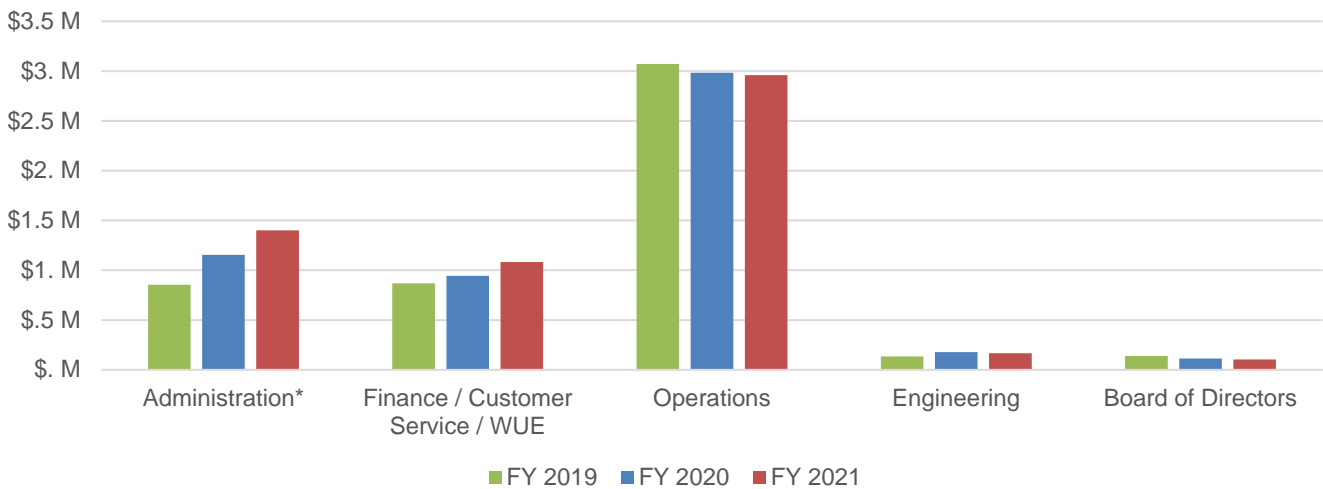
District expenses are comprised of three major categories: Operating Expenses, Project Expenses, and Debt Service. The chart below presents the FY 2021 Budget by expense category, with Operating Expenses broken down by Division. *



*Data from the FY 2021 Budget

Operating expenses are the organization's largest expense category. Through Q4 of FY 2021, which accounts for activity from July 2020 through June 2021, operating expenses are below budget. Total operating expenses in FY 2021 exceed the FY 2020 total by 6.3%. The chart below provides a comparison by Division for each of the past three fiscal years.

Operating Expenses 3 Year History by Division
July 2020 - June 2021

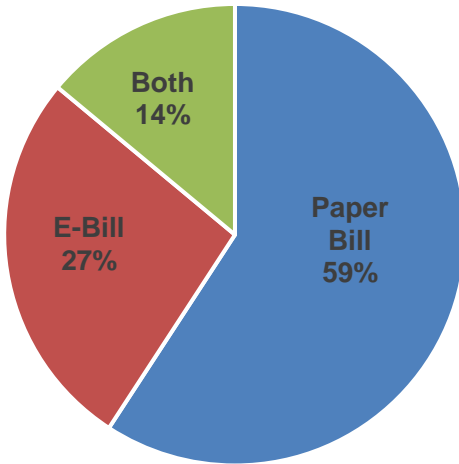


Customer Accounts

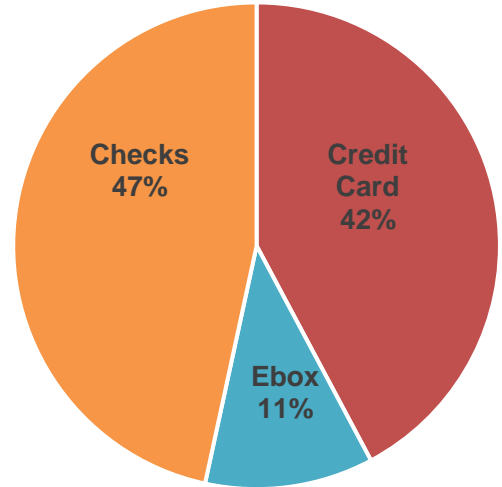
The charts below provide additional information on how customers interact with the District.

Total Accounts: 4,421

How do customers RECEIVE their bill?



How do customers PAY their bill?



Are customers making timely payments?

| | Aging Schedule | | | |
|---------------------|-------------------------|------------------|------------------|------------------------------|
| | Balance as of 6/30/2021 | Apr-2021 Billing | Feb-2021 Billing | Dec-2020 Billing (& Earlier) |
| Past Due Balance \$ | \$ 53,040 | \$ 20,398 | \$ 10,447 | \$ 22,195 |
| Accounts | | 91 | 45 | 29 |

Accounts Receivable - Past Due \$ Balance

