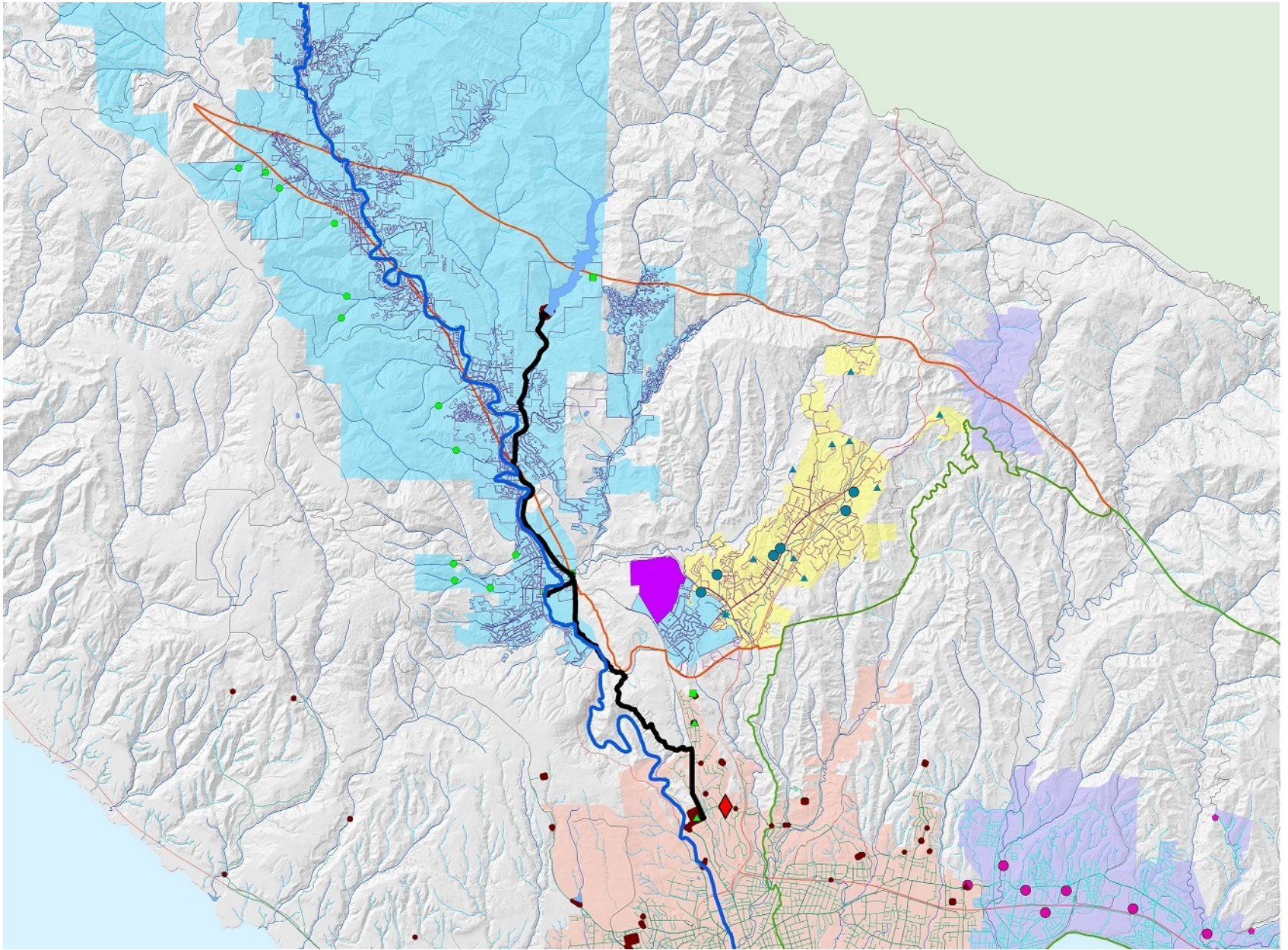
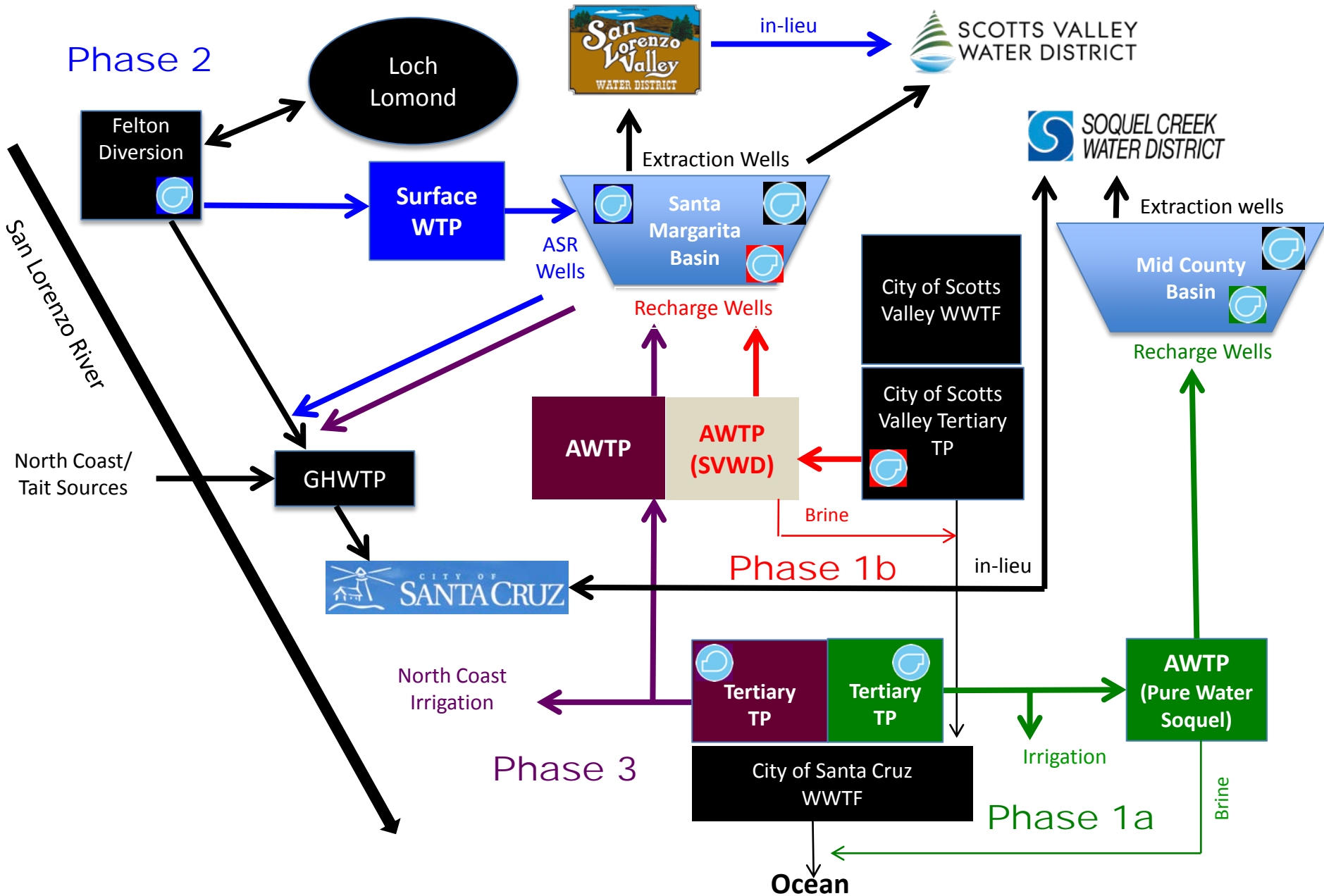


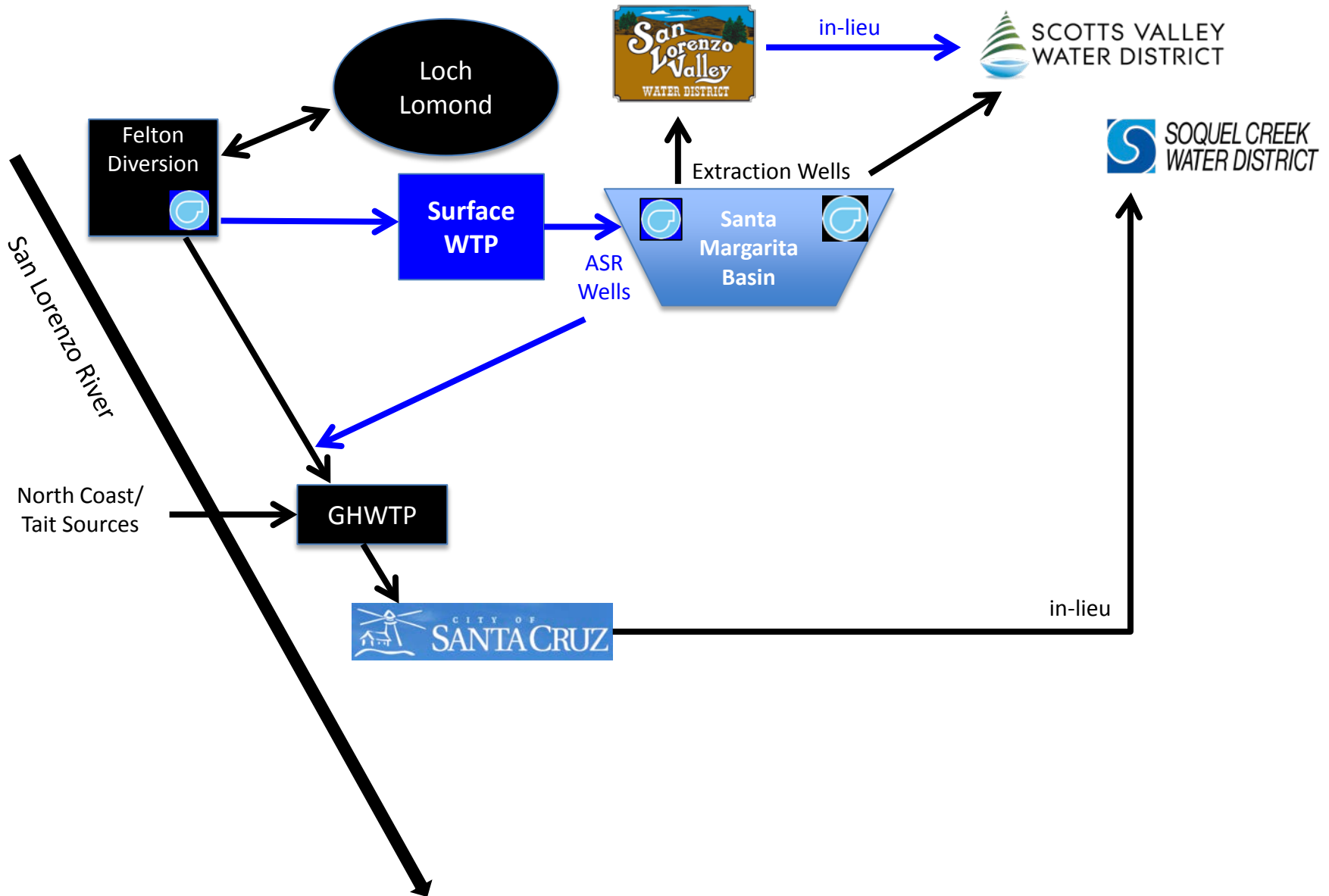
Conjunctive Use
of Surface and Groundwater
in Santa Margarita Basin



Current Plans and Phased Conceptual Projects



Conceptual Conjunctive Use



Memorandum of Agreement

City of Santa Cruz

San Lorenzo Water District

Scotts Valley Water District

To jointly fund and collaboratively implement a work plan to explore opportunities for conjunctive use of surface and groundwater at Santa Margarita groundwater basin and vicinity